



Atmosphere S2

Owners Manual

IMPORTANT SAFETY INSTRUCTIONS



The lightning flash with arrowhead symbol, within an equilateral triangle, is intended to alert the user to the presence of uninsulated "dangerous voltage" within the product's enclosure that may be of sufficient magnitude to constitute a risk of electric shock to persons.

CAUTION:
TO PREVENT THE RISK OF ELECTRIC SHOCK, DO NOT REMOVE COVER (OR BACK). NO USER SERVICEABLE PARTS INSIDE. REFER SERVICING TO QUALIFIED SERVICE PERSONNEL.

The exclamation point symbol, within an equilateral triangle, is intended to alert the user to the presence of important operating and maintenance (servicing) instructions in the literature accompanying the product.

1. **READ INSTRUCTIONS** - All safety and operating instructions should be read before this product is operated.
2. **RETAIN INSTRUCTIONS** - The safety and operating instructions should be retained for future reference.
3. **HEED WARNINGS** - All warnings on this product and in the operating instructions should be adhered to.
4. **FOLLOW INSTRUCTIONS** - All operating and use instructions should be followed.
5. **WATER & MOISTURE** - Do not use this product near water - for example, near a bathtub, washbowl, kitchen sink, laundry, tub, in a wet basement, near a swimming pool, or the like.
6. **ATTACHMENTS** - Do not use any attachments not recommended by the product manufacturer as they may cause hazards.
7. **ACCESSORIES** - Do not place this product on an unstable cart, stand, tripod, bracket, or table. The product may fall, causing serious injury to a child or adult, and serious damage to the product. Use only with accessories recommended by the manufacturer.
8. **WALL or CEILING MOUNTING** - This product should be mounted to a wall or ceiling only as recommended by the manufacturer.
9. **VENTILATION** - This product should be situated so that its location or position does not interfere with its proper ventilation. For example, this product should not be situated on a bed, sofa, rug, or similar surface that may block the ventilation openings; or placed in a built-in installation such as a bookcase or cabinet that may impede the flow of air through the ventilation openings.
10. **HEAT** - This product should be situated away from heat sources such as radiators, heat registers, stoves, or other equipment that produce heat.
11. **POWER SOURCE** - This product should be operated only from the type of power source indicated on the marking label. If you are unsure of the type of power supply to your home, consult your product dealer or local power company.
12. **POWER CORD PROTECTION** - Power supply cords should be routed so that they are not likely to be walked on or pinched by items placed upon or against them, paying particular attention to cords at plugs, convenience receptacles, and the point at which they exit from the subwoofer.
13. **CAUTION:** To prevent electric shock, match wide blade of power plug to wide slot of receptacle and fully insert.
14. **OVERLOADING** - Do not overload wall outlets, extension cords, or integral convenience receptacles as this can result in a risk of fire or electric shock.
15. **CLEANING** - This product should be cleaned only as recommended by the manufacturer.
16. **NONUSE PERIODS** - The power cord of the subwoofer should be unplugged from the outlet when left unused for a long period of time.
17. **OBJECT & LIQUID ENTRY** - Care should be taken so that objects do not fall and liquids are not spilled onto the enclosure.
18. **DAMAGE REQUIRING SERVICE** - The subwoofer should be serviced by qualified service personnel when:
 - a. The power supply cord or plug has been damaged.
 - b. Objects have fallen or liquid has been spilled into the subwoofer.
 - c. The subwoofer has been exposed to rain.
 - d. The subwoofer does not appear to operate normally or exhibits a marked change in performance.
 - e. The subwoofer has been dropped or damaged.
19. **SERVICING** - Do not attempt to service the product yourself beyond what is described in these operating instructions.
20. **REPLACEMENT PARTS** - When replacement parts are required, be sure the service technician has used replacement parts specified by the manufacturer or have the same characteristics as the original part. Unauthorized substitutions may result in fire, electric shock, or other hazards.
21. **SAFETY CHECK** - Upon completion of any service or service of repairs to this product, ask the service technician to perform safety checks to determine that the product is in proper operating condition. All other servicing should be referred to qualified service personnel.

CONTENTS

Introduction.....	4
About XTZ.....	4
Product information.....	5
Installation.....	6
Calibration.....	8
Care of your speaker.....	10
Troubleshooting and service.....	10
Technical specifications.....	11
Service & support.....	12

Introduction

Introduction

Congratulations on your purchase of XTZ loudspeakers. This product represents the state of the art in loudspeaker performance and will provide you with years of listening pleasure when properly setup and cared for. We strongly urge you to read this owner's manual and follow the instructions provided to help you attain maximum system performance.

If you have no previous experience of these kinds of installations, or if you have any questions, feel free to contact our free of charge support and we will help you. (See further under the heading of **Support** on the last page of this manual).

Prior to installation

Please unpack the system carefully. Use caution when lifting or moving to avoid injury. Save the carton and all packaging materials for future use. Packing this unit in any other carton may result in damage when shipping that is not covered by the warranty. Fill out and return the warranty card to complete your product registration and record the serial number and purchase information in the space provided for your own records.

Operating environment

Operating environment temperature 40°F to 95°F (4°C to 35°C) with less than 85% relative humidity. Do not install this product in a poorly ventilated area, or in locations exposed to high humidity, direct sunlight, or strong artificial light.

Warning!

This equipment is not waterproof. To prevent a fire or shock hazard, do not expose this equipment to rain, moisture or any liquids. Do not place a container filled with liquid on or near this equipment (such as a drink or flower vase). To prevent a fire hazard, do not place an open flame (such as a lighted candle) on this product. Please observe all warnings on the equipment itself. There are no user serviceable parts inside. Please refer all service questions to your authorized dealer.

About XTZ

Philosophy

Our reference and starting point is to recreate a natural sound, but also in respect to the fact that acoustics and sound always is a matter of taste.

XTZ Goals

To provide the optimal relation between price, performance and quality on the market.

Our concept

- To produce the perfect compromise.
- Cost-effective manufacturing at a large scale.
- The quality of our products is more important than the marketing.
- Reduce the number of middlemen.

Contact us

Website: www.xtz.se / www.xtzsound.com
E-mail: info@xtz.se

Product information

Product features

- Atmosphere S2 speaker comes in **Left** and **Right** versions, due to two axis inclination of the driver.
- Fits perfect on top of the XTZ Cinema M6 speaker with the same cabinet geometrics, the driver is directed in a way that the sound will bounce of the ceiling to the listening position, creating a illusion of ceiling mounted speaker.
- Designed as a versatility speaker, intended to be used for stereo, surround or as height channel on the M6 or in the ceiling.
- Several mounting positions for standard bracket mounts ensures a wide versatility of speaker positioning and directions due to its inclining driver geometric.
- Cabinet with non parallel walls, for minimize cabinet resonance
- One 5.25" Coated Paper Membrane woofer
- One 16mm Soft Dome coaxial mounted tweeter
- High tech woofer system ensures fast and accurate bass

Grill & logo

The cloth grill has a magnetized mounting system to have the flexibility of a subtle look with the driver covered or a technical look where the drivers are showing with invisible grill mounts. The logo is also magnet mounted for your customization.



Before you begin

Your new loudspeaker provides for a number of installation options. Read all the installation information contained within this manual in order to determine which installation option is best for your system configuration.

- Select appropriate cable with connector type (banana plug, fork/spade or bare) to match your equipment
- Determine optimum loudspeaker mounting location
- Obtain any appropriate mounting hardware (i.e. matching stand or wall mounts)
- Determine system configuration (e.g. music or surround sound system type for proper equipment settings & calibration)

NOTE: Remember to make all equipment connections with system power disconnected to reduce the risk of personal shock or damage to equipment. Consult your dealer or info@xtz.se for optional accessories that may be required to properly complete your system installation.

Installation

Cables

When installing your new loudspeakers you should use speaker cables of cross sectional area of minimum 2.5 mm² or 14 AWG. It is possible to use banana plug or fork/spade as connectors, or simply bare wire. Keep in mind that if you use the loudspeakers as surrounds or back channel larger gauge cable may be necessary because the signal path is longer. Keep the length of cables as short as possible.

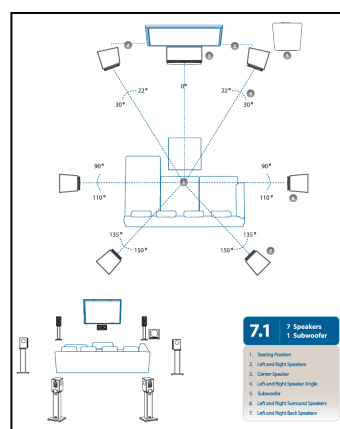
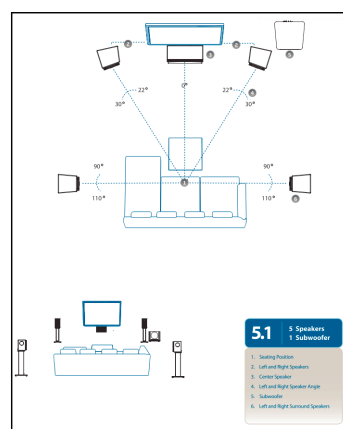
Placement

These loudspeakers cover a broad range of frequencies and have unique dispersion characteristics that will ease setup in achieving an excellent sounding system. With that said, please keep in mind that loudspeaker placement will influence the frequency response, sound stage and imaging as the room has a significant impact on the sound. Placing the loudspeakers in the wrong location may degrade sound quality, frequency response and substantially reducing your overall listening pleasure. Many rooms often end up with non-optimal placement, depending on the size and location of the furnishings within your room. Finding the optimal location usually requires some experimentation to determine what sounds best in your room, from your listening position(s). We suggest you read the general guidelines below and place the loudspeakers in one of the suggested locations. We also recommend keeping the speaker's distance to the listening position as similar as possible for all channels, then as a fine tune, use your AV Receiver/pre to adjust delays of each channel individually.

Proceed to listen to the loudspeakers multiple times, trying a few different locations before settling on the final location. To do this, perform basic setup and listen to a familiar music track or movie scene. Then move the loudspeakers to an alternate location & repeat listening to the same music track or movie scene. If you have a test CD and SPL meter or preferably one of our measurement systems (**Room Analyzer II / II Pro**), performing a basic frequency response test can help you determine which location provides the best frequency response.

General guidelines

The S2's are intended to be used for stereo, surround or as height channel on the M6 or in the ceiling. The Left and Right are mirror image speakers. With the S2 used as surround speaker, the tweeter should be placed at ear height and the speakers directed towards the listening position, as the figures below shows. When used as height channels we recommend to optimize the experience by placing speaker where you want the sound to come from. E.g. Height channels mounted in the ceiling directed toward the listening area. The speakers can be mounted on the wall or in the ceiling with the integrated wall mount (**Flush Mount**). Our recommendation for home cinema is to use them with a dedicated subwoofer(s) (**SUB1x12**, **SUB2x12**, or **SUB3x12**) to properly handle the lowest frequencies and improve the overall dynamic range. If your choice is a five channel (5.1) setup you can experiment with the placement for your surrounds channel speakers as shown in the figure to the left. If your choice is a seven channel (7.1) setup you can experiment with the placement for your surround and back channel speakers as shown in the figure to the right. If the listening position is against the back wall our recommendation is to go for five channel setup with the speakers placed beside the listening position as the figure to the left shows or mounted on the back wall with the speakers tilted in towards the listening position.



Caution

- Do not place the loudspeaker next to heat sources, such as furnace registers, radiators, etc.
- Do not place the loudspeaker near sources of excessive moisture, such as evaporative coolers, humidifiers, etc.

Installation

The connections for the loudspeakers are located on the rear of the unit. The figure down to the right illustrates the input terminals of the loudspeaker with bi-wire and bi-amp options in addition to normal single wire cable.

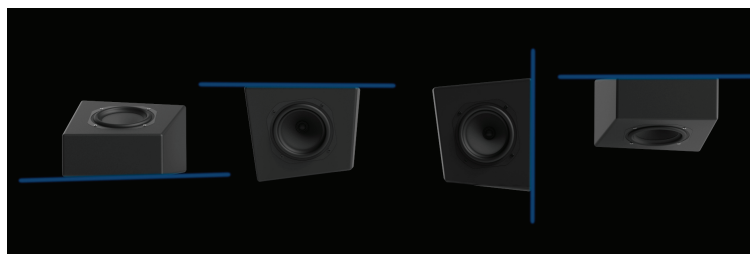
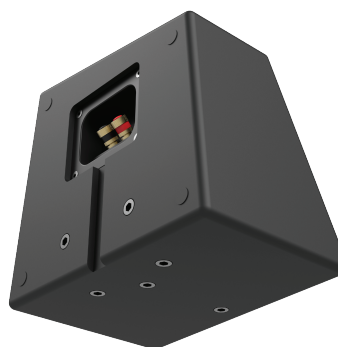
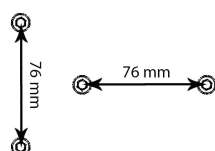
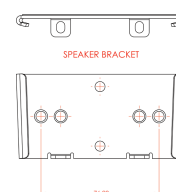
Connecting the speaker

Connect the same wire of the cable from + on the amplifier to + on the speaker and - on the amplifier to - on the speaker. If you mix them you will introduce a polarity change resulting in degraded sound quality, with cancellation of sound waves from the other channels. This is readily apparent as reduced low frequency sound.



Speaker mounting

The Atmosphere S2 has three sets of threaded inserts to attach the mounting bracket of your choice, all with a distance of 76 mm (3") which are intended to be used with our Flush Mount Brackets, see figure here to the right. This spacing is also widely compatible with many aftermarket mounting brackets. To the right below is an figure illustrating of the six inserts for three different bracket mounting positions. Underneath the Atmosphere S2 speaker there are four rubber pads, intended for protection and mechanical isolation when mounted on top of the M6 Speaker.



Examples of mounting possibilities for the Atmosphere S2 speaker : Ontop of the M6 (Upward direction), Ceiling (inward direction) , Wall (inwards direction), Ceiling (downward direction).

Calibration

Introduction

For optimal performance, you should calibrate your system to ensure proper level matching between all speakers and the proper setting of all controls (including crossover frequency, phase, and any channel delays your receiver/processor may offer). This procedure will vary depending on system configuration and the information below is provided as a basic guide to assist you. Refer to the owner's manual for your receiver/processor for information on performing the steps required to enter their setup mode and adjust any applicable settings.

After all connections have been made, turn on the AC power to your system, starting with the first piece of source equipment in the signal chain (such as a CD or DVD player), then power on any dedicated equalizer, then power on your receiver/processor/amplifier(s), and last but not least, power on the subwoofer. You will need to enter your receiver's/processor's setup mode and adjust any applicable speaker settings to properly match your system configuration.

Receiver/Processor With Automated Setup & Calibration Function

After you have verified all speakers are connected and you have measured distances of each to the listening position, perform the auto-setup routine on your receiver/processor (if available). Many newer home theater receivers/processors combine a measurement microphone and an automated setup routine to assist you with proper setting of speaker levels, crossover frequency, speaker delay and phase. Consult the owner's manual for your receiver/processor for further instructions on how to perform the setup routine. After the auto-setup routine is complete, verify the final settings the receiver/processor selected to ensure there are no erroneous settings (e.g. the settings should match your system configuration). Some settings to verify may include:

- Number of speakers (e.g. 7.1 or 5.1 system, etc.)
- Type/size of speakers (e.g. small or large front/surround and subwoofer set to yes/on)
- Crossover point should be similar for identical speakers (e.g. if your system using 3 of the same-speakers for all front channels, verify the receiver/processor selected the same crossover point for all these channels)
- Crossover frequency should be selected. We recommend 80Hz for the M6 to start. Slightly higher or lower crossover point may yield better results in your system.
- Note: some receivers do not have an adjustable frequency, instead there is only a choice of "small" or "large". In this case, we recommend choosing "small".
- Gain settings for each channel should be reasonably close (e.g. if the speakers are placed at even distances, the gain setting for each channel should typically be within a couple dB from channel to channel). If the receiver/processor gain trim setting for the subwoofer channel is a large value (e.g. +12 or -12dB) you may need to increase the subwoofer's gain to achieve a better match.
- Low subwoofer gain/trim settings (on your receiver/processor) effect the operation of the "AUTO ON/OFF" signal sensing circuit. If your receiver/processor gain is set to a low values (e.g. attenuating the signal -6dB or more) this reduces the signal available to properly "turn on" the subwoofer when using the "AUTO ON/OFF" feature. If your subwoofer turns off unexpectedly when watching movies at low volumes, you may wish to increase the receiver's/processor's subwoofer gain trim, and manually reduce the volume using the subwoofer's "BASS LEVEL" control to maintain proper balance.
- Polarity/phase: This should be adjusted for smoothest frequency response near the crossover point.
- EQ settings: if your receiver/processor allows you to see the eq settings for each channel, verify that it is not adding any extra "limiter", or "HPF" to the subwoofer channel, and that it is not adding a high level of boost (e.g. >+3dB) or cut (e.g. -10dB).

NOTE:

In some installations, automated room eq algorithms may make undesired changes to the subwoofer signal settings trying to obtain what they believe is the best room response curve. In some systems these changes have been known to degrade the overall sound quality of the subwoofer. If using a receiver/processor with automated room eq function, we advise you listen to the system first with the eq disabled, then again with the eq enabled, to determine if the changes are beneficial.

Receiver/Pre-amp Without Automated Setup

Older receivers and/or music preamps may not provide an automated setup function. With these systems, optimal calibration usually requires some type of test equipment be utilized to provide test tones and take measurements to properly calibrate your system. Some equipment you may use for this includes:

- One of our measurement systems **Room Analyzer II / II Pro**. They are excellent tools to use when optimizing and setting up a subwoofer or multiple subwoofers in a system.
- Test signal source, pink noise and/or sine wave of various frequencies (CD, DVD, your receiver/pre-amp, or external measurement equipment)
- SPL meter (low cost handheld versions can be purchased online)
- RTA or other frequency response measurement tool (optional)
- Start with a quiet room free of excess background noise (e.g. people talking, kids playing, dogs barking, etc.).
- Verify that subwoofer control settings match illustrations for your type of system configuration
- Set any receiver/pre-amp speaker settings at an appropriate starting point (e.g. crossover). We recommend 80Hz crossover as a good starting point.
- Start playing a test signal with energy in the subwoofer crossover region (e.g. full bandwidth pink noise) through all speakers
- While observing an SPL meter (or listening to the mid-bass level), have an assistant adjust the "VARIABLE PHASE" knob from 0° to 180° and observe any change in mid-bass level near the crossover frequency. Set the control to the position with the greatest amount of bass.
- Play a test signal (e.g. pink noise) through only 1 speaker at a time. If using your receiver, you may need to enter its setup mode to perform this function.
- Place an SPL meter in your typical listening position, approximately at ear height (use of a tripod may be required), and set to "C" weighting and "Slow" response (if those settings are available)
- Adjust volume to a modest level - typically 75-85dB (loud enough to clearly hear, but not excessively loud)
- Adjust controls as necessary to play the same test tone through each speaker and subwoofer(s) in the system, 1 speaker at a time.
- Adjust the individual channel gain/trim of your equipment to obtain the same SPL reading from each speaker as you measured from the first speaker

A home theater receiver may walk you through portions of this procedure. Follow any instructions from your receiver's owner's manual as applicable to your system setup. Once finished, listen to some familiar music and movie tracks. Minor adjustment of the levels may be desired. Do not be afraid to experiment with adjustments and try different EQ settings to find what may improve the sound in your system and room the best!

NOTE:

There are limitations on how well the bass management works in a receiver/processor. The settings for the subwoofer(s) might need to be adjusted manually either on the subwoofer(s) OR preferably in the receiver/processor. For some cases when having only one "SUBWOOFER" output jack and multiple subwoofers and the subwoofers are not placed symmetrically in the room (e.g. having an opening on one side of the room) you might need to apply different settings for the "VARIABLE PHASE", "BASS LEVEL" and EQ setting on the subwoofers. There is also the option to use one of our measurement systems Room Analyzer II / II Pro. They are excellent tools when optimizing and setting up a subwoofer or multiple subwoofers in a system. Do not be afraid to experiment with slight adjustments to find what may improve the sound in your system and room the best!

Do not hesitate to contact us at info@xtz.se for questions about settings. We are happy to assist you in optimizing your system!

Care of your speaker

Your new speakers does not require any regular maintenance or calibration. Normal dusting or cleaning of the surface for appearance purposes is all that is required.

Cabinet and baffle

Avoid using harsh detergents or chemicals when cleaning the cabinet. Abrasives, detergents, or cleaning solutions may damage the finish on the cabinet. We recommend using only a damp cloth or automotive grade "quick detailer" designed for painted surfaces, plastic & metal trim, to clean the cabinet.

Grill

The cloth grill may be carefully cleaned using a vacuum. Animal hair can be removed using masking tape or similar. Avoid using brushes with stiff bristles that may damage the grill cloth.

Woofer/Tweeter

DO NOT use liquids, brushes or a vacuum to clean the drive units. Avoid touching the tweeter dome as this could result in permanent damage.

Troubleshooting and service

If you should experience a problem with the operation of your speaker, here is a quick trouble shooting guide to help:

PROBLEM: Speaker has no output

- Check to insure the speaker wire is connected securely at both the amp and speaker connections
- Make sure the binding posts are snug
- If only using 1 set of wires (no bi-wire), make sure the gold plated jumpers are properly connecting HF to LF for both + and - connections. The binding posts should be snug to the jumper.
- Verify the source is working (try connecting to a speaker you know is working)
- In some cases the source material may not play all 5.1 or 7.1 speakers all of the time (ie, 2 channel stereo will not have any output at the center channel)

PROBLEM: Speaker has minimal bass or image is poor

- Check to insure the speakers wire is connected with correct polarity (+ to +, - to -)
- If only using 1 set of wires (no bi-wire), make sure the gold plated jumpers are properly connecting HF to LF for both + and - connections. The binding posts should be snug to the jumper.

PROBLEM: Intermittent sound

- Check for loose, frayed or shorted speaker wire. It is possible for frayed wire to touch the other terminal creating a short or intermittent short
- Make sure the binding posts and jumpers are snug

PROBLEM: Sound coming from woofer or tweeter only

- Both HF and LF inputs must be connected. Typically, you will use the included jumpers for this. If you are Bi-wiring, check that all wires are connected securely at both the amp and speaker connections
- If only using 1 set of wires (no bi-wire), make sure the gold plated jumpers are properly connecting HF to LF for both + and - connections. The binding posts should be snug to the jumper.
- Make sure the binding posts are snug

The following conditions require service by a qualified technician:

- The unit has been exposed to excessive liquid.
- The speaker sounds is abnormal and there is a "burned" smell.
- You dropped the speaker and you hear something is loose inside. In this case if you use it its risk of burn the amplifier
- Part of the cabinet, drivers, or electronics have been physically damaged.

Technical specifications

Construction type	2-way, coaxial drivers	
Enclosure	Sealed	
Anechoic frequency range	95 Hz - 25 kHz +/- 3 dB	
In-room frequency range	70 Hz - 25 kHz, +/- 3 dB	
Crossover frequency	4 kHz	
Sensitivity	83 dB, 2.83 V/1 m	
Impedance	8 ohm nominal	
Recommended hi-pass	70 - 120 Hz, 24 dB/oct.	
Recommended amp-power	50 - 100 W RMS	
Binding posts	Gold-plated / Banana plug / Spade / Bare wire	
Color	Matte black	
Warranty	Five years	
Dimensions (HxWxD)	5.9 x 9.1 x 8.7" 150x230x220 mm	
Weight	5.5 lbs. (2.5 kg) / pcs	

Specifications subject to change without notice.

Service & support

"Do It Yourself" – service

We apply "do-it-yourself" service on all XTZ products. If you by yourself are able to find out what part of the loudspeaker is defective, you are fully allowed to unmount that part (which would normally be a driver, a filter or the amplifier) and send it back to us for exchange.

IMPORTANT!

Always contact your dealer or us before taking the loudspeaker apart. It can also help you finding the fault.

You can of course always choose to return the whole loudspeaker therefore you should save the original package.

To aid service, XTZ products are constructed and produced using common technology, so that basically most people are able to "unscrew" the loudspeaker using common tools..

If something is broken

If you cause additional defects by yourself when unmount the defective part, the warranty still applies if it is obvious that the part had a manufacturing defect. In other cases however, the warranty does not apply if you cause other defects on the loudspeaker

Where to send the product for a warranty repair

For service we refer to your retailer.

For questions regarding service, contact us by email: support@xtz.se

Website: www.xtz.se / www.xtzsound.com

ALWAYS pack the product / part very carefully. Unfortunately damages during transportation are very common. If the package is weak, the transporting company does not compensate damages. Always enclose a copy of the receipt and a description of the defect.

Support

Please contact our free of charge support if you need installation advice, or if any problem occurs during the installation.

Contact us by e-mail support@xtz.se and include your phone number if you wish verbal help, and we will call you back.

Thanks for your purchase!

